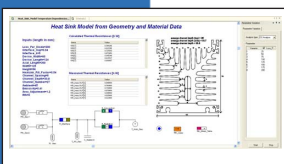
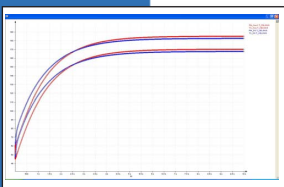
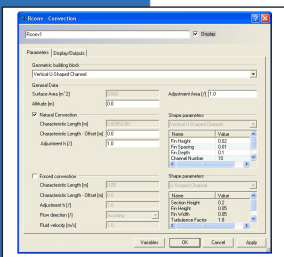
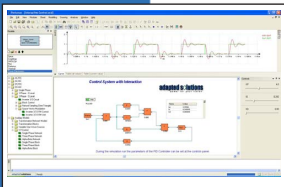
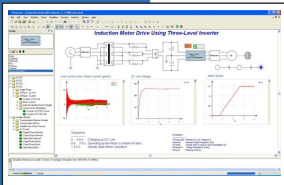


# Training Course

# PORTUNUS



The user of the simulation software **Portunus** may choose between a variety of ways to model manifold technical systems. Effective usage of these functionalities requires knowledge regarding the mathematical methods used in the software, the features provided by the graphical user interface and the properties of the library models.

Within the scope of a 2-days training course, the basics of **Portunus** are explained and demonstrated as practical examples. The main topics of the training course are:

- Basics of system simulation
- Concepts of **Portunus**
- Modelling examples for networks, block diagrams and state machines
- User-defined models (subsheets, C++ programming interface)
- Integration of models written in VHDL-AMS
- **Portunus** automation interface
- Add-On libraries
  - Power Electronics Library**
  - Thermal Library**

In addition to the course materials, a number of example files are available. Customer-specific modelling problems may be discussed on demand.

